

SOCIAL STUDIES Paper-II
(English Medium)

Class: 10

Max. Marks: 50

Time: 2.45Hrs

Instructions:

1. There are 4 Sections and 33 Questions in the paper.
2. Answers should be written in a given answer booklet.
3. There is internal choice in Section - IV only.
4. Write all the questions visible & legibly.
5. 15 minutes are given for reading the question paper and 2.30 hours given for answering the questions.


Section - I

Note: 1. Answer all the Questions.

12 X ½ = 6

2. Each Question carries ½ Mark

1. Telecom revolution was introduced by
 - a) Indira Gandhi
 - b) Rajeev Gandhi
 - c) Deva gowda
 - d) V.P. Singh
2. Correct the following sentence
"Bangladesh war was happen in 1981 with China"
3. Fillup the incomplete pair
Taskent Agreement - Lalbahadur Sastri
Simla pact -
4. Match the following.

(A) Kwame Nkrumah	(i) Egypt
(B) Abdul Nasser	(ii) Indonesia
(C) Sukarno	(iii) Kenya
5. Expand CENTO.
6. Who is the person in the given picture?
7. Find out the correct statement/ Sentence.
 - a) India and Bangladesh were signed on 25years Peace agreement.
 - b) Both of them have the differences over the issue of sharing river waters of Indus and Ganga
8. Draw the rough map of 'Silent Valley' State?
9. Give an example to environmental movement?
10. The first non-congress Prime Minster of India is?
11. "Out of every rupee spent on poor barely fifteen paise reach to them" – Who said this?
12. Find the odd one out from the following.
Poland, Hungary, East Germany, Spain

Section - II

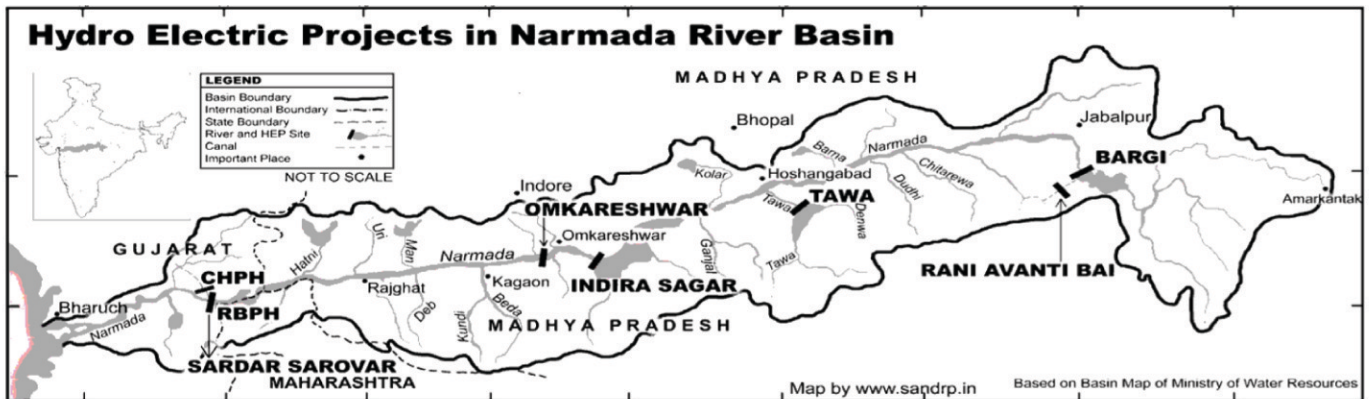
Note: 1. Answer all the Questions.

8 X 1 = 8

2. Each Question carries 1 Mark

13. Write any two slogans to reduce Nuclear Weapons?

14. Name the dams in the given map?



15. "I have a dream" said Martin Luther King. What is his dream?

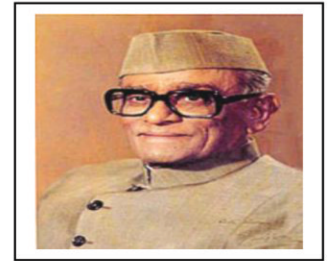
16. Who is the present Chief Information Commissioner and What is his term?

17. Write any two special features of the person given in the picture?

18. What is the main aim of NALSA?

19. Write any two effects of Global warming?

20. What is policy paralysis?



Section - III

Note: 1. Answer all the Questions.

8X 2=16

2. Each Question carries 2 Marks.

21. Write about the greatness of NTR?

22.



Answer the following questions based the on given picture.

a) Which organisation is associated with the given emblem?

b) Which tree branches are shown in given picture?

23. What are the functions of legal service authority?

24. Why are the women's given in the picture patrolling at night?

Explain the reasons?

25. What are the basic features of Social Movement?

26. Write about the exemptions to RTI?

27. Explain about the Panchsheel principles?

28. What are the conditions laid down by IMF to grant loan to India in 1991?



Note: 1. Answer all the Questions. 2. Each Question has internal choice

3. Each Question carries 4 marks.

29. "The Ethnic conflicts affected India's relations with Srilanka." Justify?

(Or)

RTI resembles the true spirit of Democracy? Explain it?

30. What is the role of UNO in preserving the peace of the World in present context?

(Or)

What suggestions do you give to maintain Peace and friendly relations with neighbouring countries of India?

31. "During the early 1970's as more American soldiers returned from Vietnam with serious doubts about the wisdom of bombing on innocent people who have no way posed a threat to Americans"

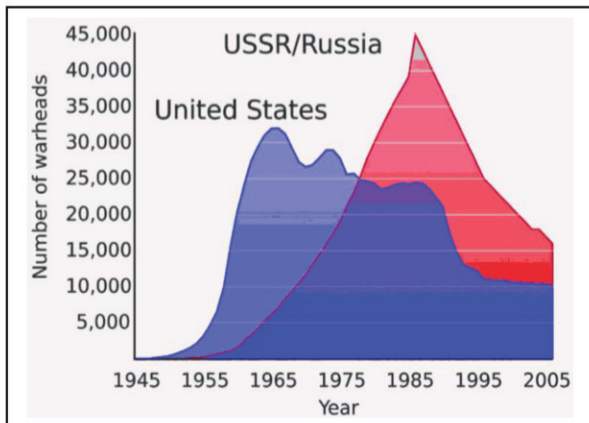
Q: Did America made an unlawful war with Vietnam? Write your opinion on it?

(Or)

"Religion has been playing a prominent role since the partition of India"

Q: Write your evidence for above statement.

32.



Answer the following questions based on given graph.

- a) What does the graph indicate to us?
- b) How many stock piles were maintained by USA by 1965?
- c) In which decade USSR had maintained large number of Nuclear stock piles?
- d) Why did USA and USSR compete with each other?

(Or)

Answer the following questions based on the given time line chart.

- a) Expand NDA?
- b) Which Prime Minister was assassinated in 1984?
- c) Who made agreement with Mizo National Front?
- d) Write the incidents that took place in 1977?



33. Locate the places in World Map.

A. Jew's country

B. Head quarter of IMF

C. United Kingdom

D. The country in which Warsa pact was made.

(Or)

A. The first country to enter into Space

B. The Head quarter of UNO

C. Suez canal was nationalised by this country

D. The country of Green Peace Headquarter.

This question paper edited by *Sri Madithati Narasimha Reddy*, H.M, ZPHS, Sambepalli.
Prepared by Sri **D. Siva Reddy**, SA, Social, ZPHS, Sambepalli.

